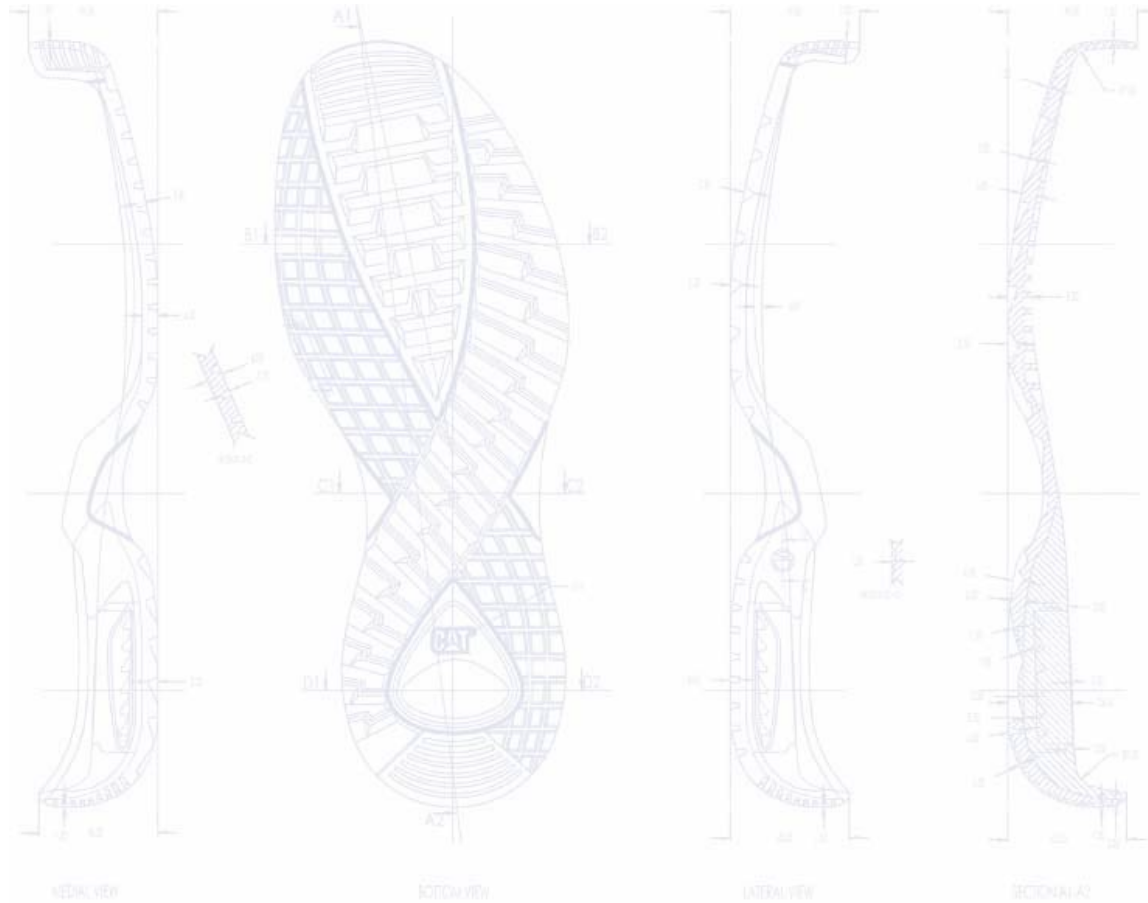


Andy Kalns • Footwear Designer

Portfolio

www.shoedesign.andykalns.com • 210-900-3156



Andy Kalns Footwear Design Portfolio

210-900-3156 www.shoedesign.andykalns.com

KÖPPEN

DESIGN BY ANDY KALNS

COLORWAY 003 / 25AUG2012

MEN'S



LATERAL



MEDIAL

Winning design for the Mesh01 competition.

KÖPPEN

DESIGN BY ANDY KALNS

COLORWAY 005 / 25AUG2012

WOMEN'S



LATERAL



MEDIAL

Winning design for the Mesh01 competition.

Andy Kalns Footwear Design Portfolio

210-900-3156 www.shoedesign.andykalns.com

KÖPPEN

DESIGN BY ANDY KALNS

COLORWAY 006 / 25AUG2012

WOMEN'S



LATERAL



MEDIAL

Winning design for the Mesh01 competition.

KÖPPEN

DESIGN BY ANDY KALNS

COLORWAY 007 / 25AUG2012

MEN'S + WOMEN'S



LATERAL



MEDIAL

Winning design for the Mesh01 competition.

Andy Kalns Footwear Design Portfolio / Casual - Lifestyle

210-900-3156 www.shoedesign.andykalns.com



Sketch for water sports jogger/trekker.



Sketch for water sports jogger/trekker.



Sketch for water sports sandal/trekker.



Sketch for water sports jogger/trekker.

Andy Kalns Footwear Design Portfolio / Casual - Lifestyle

210-900-3156 www.shoedesign.andykalns.com



Cradle Sandal concept drawing.



Cradle Sandal concept drawing.



Cradle Slide concept drawing.



Cradle Sandal prototype.

Andy Kalns Footwear Design Portfolio / Casual - Lifestyle

210-900-3156 www.shoedesign.andykalns.com



Design rendering of an opanka sandal with wrap around adjustment fit adjustment strap and stretch cord lacing.



Design rendering of an opanka slip-on with fit adjustment strap.



Prototype of opanka sandal.



Design rendering of an opanka sandal with wrap around adjustment fit adjustment strap.

Andy Kalns Footwear Design Portfolio

210-900-3156 www.shoedesign.andykalns.com



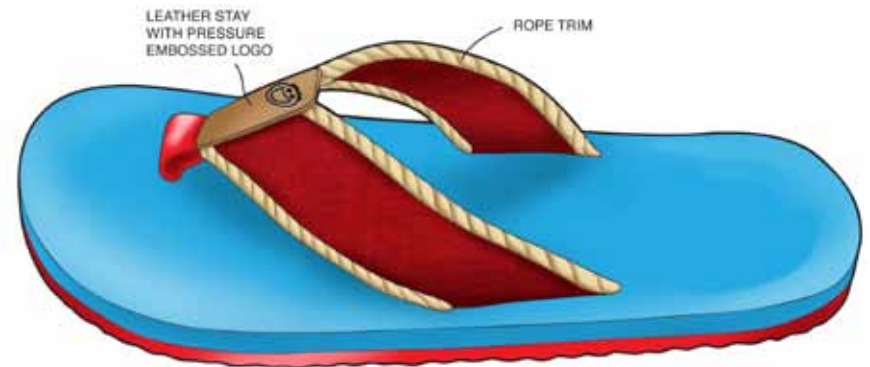
Leather upper flip-flop design with attached embellishment.



Closed toe sandal designed for rugged terrain.



Distressed canvas upper sandal/clog with EVA outsole.



Canvas/rope upper flip-flop with eva outsole.

Andy Kalns Footwear Design Portfolio / **Workboots**

210-900-3156 www.shoedesign.andykalns.com



Design concept sketch for a new workboot construction that incorporates a molded cradle (FlexiCradle).



Design concept sketch for a new workboot construction that incorporates a molded cradle (FlexiCradle).



Design concept sketch for hiker styled workboot.



Design concept sketch for athletic-hiker styled workboot.

Andy Kalns Footwear Design Portfolio / Workboots

210-900-3156 www.shoedesign.andykalns.com



Final design sketch for a new athletic styled S/T workboot.



Catalog product photo of the Headway.



Product photo of the Headway showing the slip-resistant tread pattern on the outsole.



Footwear News article about lightweight workboots. At 1lb. 3oz. the Headway is one of the lightest.

Andy Kalns Footwear Design Portfolio

210-900-3156 www.shoedesign.andykalns.com



Adelle



Adelle



Adelle



Allison



Annie



Annie



Sharon T



Sharon W